

## Low aluminium threshold Information

We have had a number of complaints recently where customers have said that doors that have a low aluminium threshold fitted to them are leaking.

Following investigation there have been several different reasons for the leaks, so as a result of this we are sending this information out as guide of what to check if you have a customer reporting to you a leaking threshold).

**Drainage holes blocked / Thresher full of detriment** – If the drainage is blocked on the threshold then the water cannot drain and as a result will leak into the property.

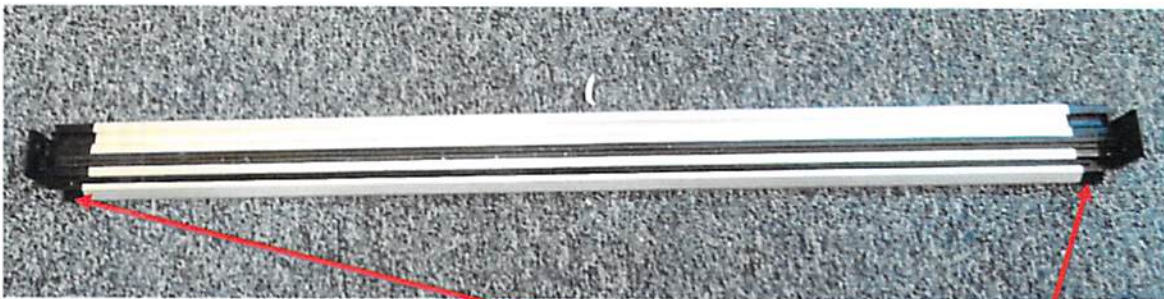
We have had occasions where installers have accidentally sealed the drainage holes on the thresher, thus preventing the water draining away correctly (see diagrams below for explanation).

Also if the threshold is full of detriment (dirt etc) the drainage will not work correctly for the same reasons.

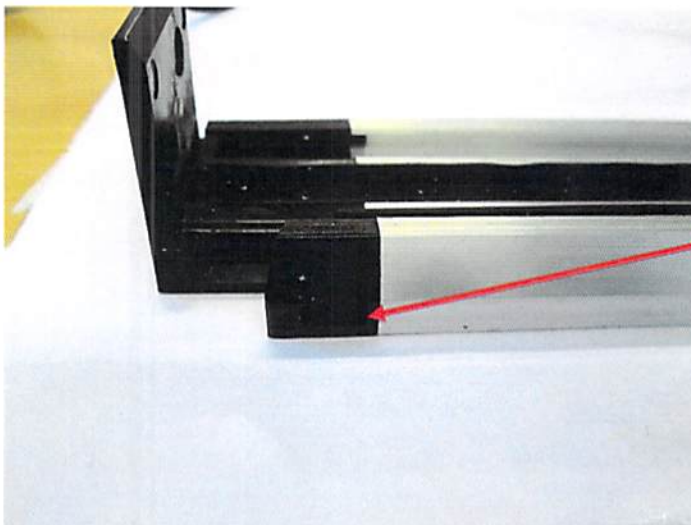
**Rubber gasket** – Another reason could be that the rubber gasket that is fitted to the thresher has been damaged in one way or another thus preventing the correct seal being formed and again adding the potential for leaks.

**Incorrectly specified** – A standard low aluminium threshold offers HALF the weather rating of a pvc or enhanced aluminium threshold, therefore in exposed areas we recommend that you specify an enhanced aluminium or PVC threshold.

### Threshold



End of threshold showing weep-hole



Weep-hole